

MicroPondless™ Waterfall Kit

How does the water circulate?

The water held within the open spaces of the gravel flows down toward the MicroCentipede™ Module, which is connected to the MicroSnorkel™ Vault. From there, it gets pumped up to the waterfall, where it flows by gravity back down through the gravel bed and MicroCentipede™ Module ... and the cycle begins again.



What if I want to add a pond later?

A MicroPondless™ Waterfall is almost a stepping-stone for people who might be interested in a full-fledged pond in the future. Just make sure you leave enough room for a pond to be added later.

Kit Includes:

- MicroCentipede™ Module
- MicroSnorkel™ Vault
- MicroFalls® Vault
- AquaSurge™ 2000 Pump
- 1.5" x 25' Kink Free Pipe
- Plumbing Assembly
- 10' x 12' 45 mil EPDM Liner
- 120 sq. ft. Underlayment
- Instructions



System Features:

- Create up to a 4' waterfall and stream with the MicroPondless™ Waterfall Kit
- Purchase additional liner to make your stream larger
- Utilize the MicroSnorkel™ Vault and MicroCentipede™ Module technology to house the pump and circulate the water
- The waterfall simply disappears into a 4' x 6' gravel bed planted with aquatic marginal plants
- Gravel basin does an excellent job of keeping the waterfall clean and clear



Distributed by:
Environmental Enhancement
Certified Aquascape Contractor
 Call for a design consultation
 940 627-3796/817 269-0654
 www.dfwponds.com

©2007 Aquascape, Inc.
 All Worldwide Rights Reserved.

Item #99493

Simple, Safe, Soothing.

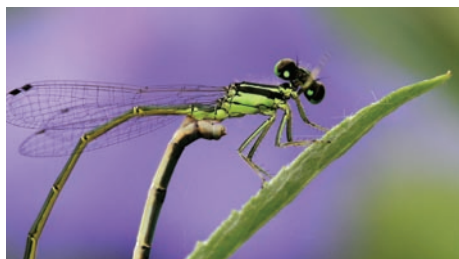


Why is it called a MicroPondless™ Waterfall?

Since the water level never pools above the level of the rock and gravel fill, it gives the appearance of a waterfall without a pond beneath it.

Are you interested in installing a water feature in your yard, but concerned about the safety and liabilities of having a pond? Or are you apprehensive about taking on the responsibility of maintaining a full-fledged ecosystem? Well, we have the answer for you. The MicroPondless™ Waterfall is basically that — a waterfall and stream, without the pond.

- Great alternative for a front yard pond; fits in small spaces where a pond might be crowded
- Perfect for public settings (ex: building entrances, children's gardens, zoos, etc.) where liabilities of a pond are a concern
- Virtually maintenance-free! Simply top off the reservoir from time to time to compensate for water loss due to evaporation
- Energy efficient – no ecological need to run the system continuously
- Set the waterfalls on a timer – ideal for vacations and night/day settings



Moving water is a magnet for birds and other wildlife

Where does the water come from?

A hole is dug, then lined and filled with rock, gravel, and water. The water is then circulated through our MicroSnorkel™ Vault and MicroCentipede™ Module filter system from beneath the rocks and gravel by a pump that sits on the bottom.

Cost

The cost of a MicroPondless™ Waterfall is usually less than a full-blown pond, and the waterfall can be placed on a timer for electrical savings.



Maintenance

Some people feel that taking care of fish would be too much of a responsibility, and that they won't be able to leave their pond for long periods of time, while others say they do not have enough room for a whole pond. The MicroPondless™ Waterfall is virtually maintenance-free!



Where does the water go?

The water runs through a pipe up to a MicroFalls® filter and down a constructed waterfall and stream, where it falls back into the reservoir.

Safety

If you have small children and safety is a concern, you can start with a MicroPondless™ Waterfall. With the simple addition of a skimmer and larger liner, you can convert your system to a pond when the kids are older.



Appearance

Freshen up the entrance to your office or home. A MicroPondless™ Waterfall can add great curb appeal to any home or business looking to add to the aesthetic value of their property. The low cost and easy maintenance make this system an easy choice for those wanting to add some zest to their existing landscape plan.

